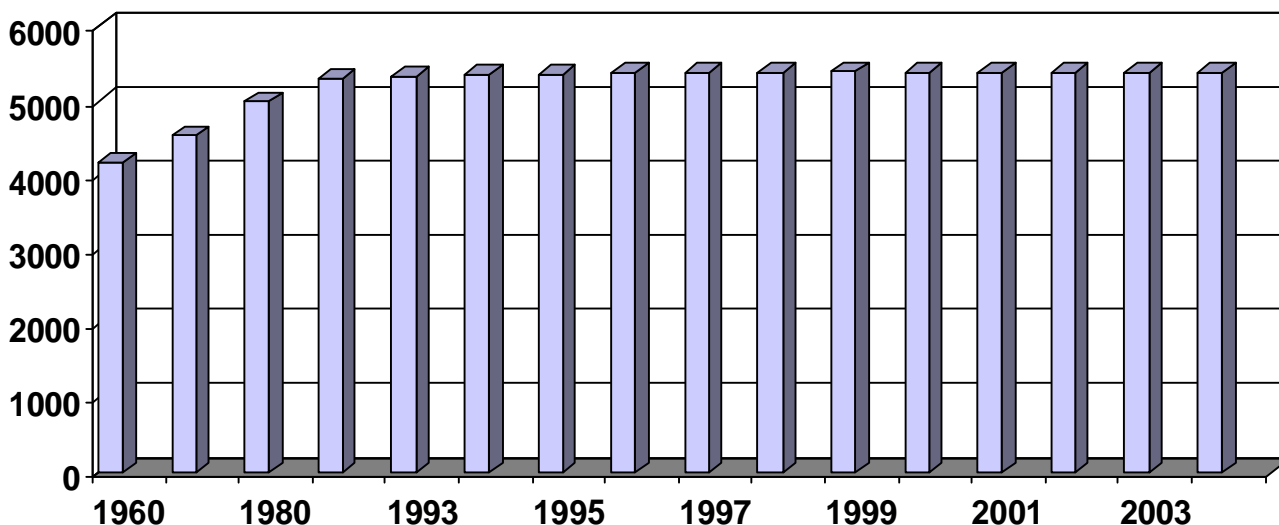


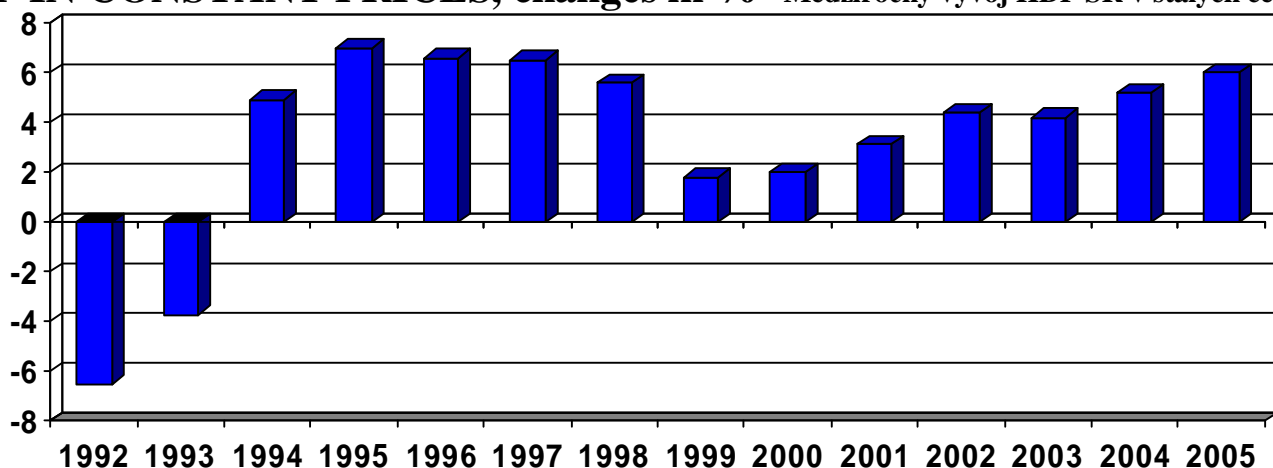
# SLOVAK REPUBLIC – SLOVENSKÁ REPUBLIKA

## POPULATION – počet obyvateľov (k 31.12.) v tis.

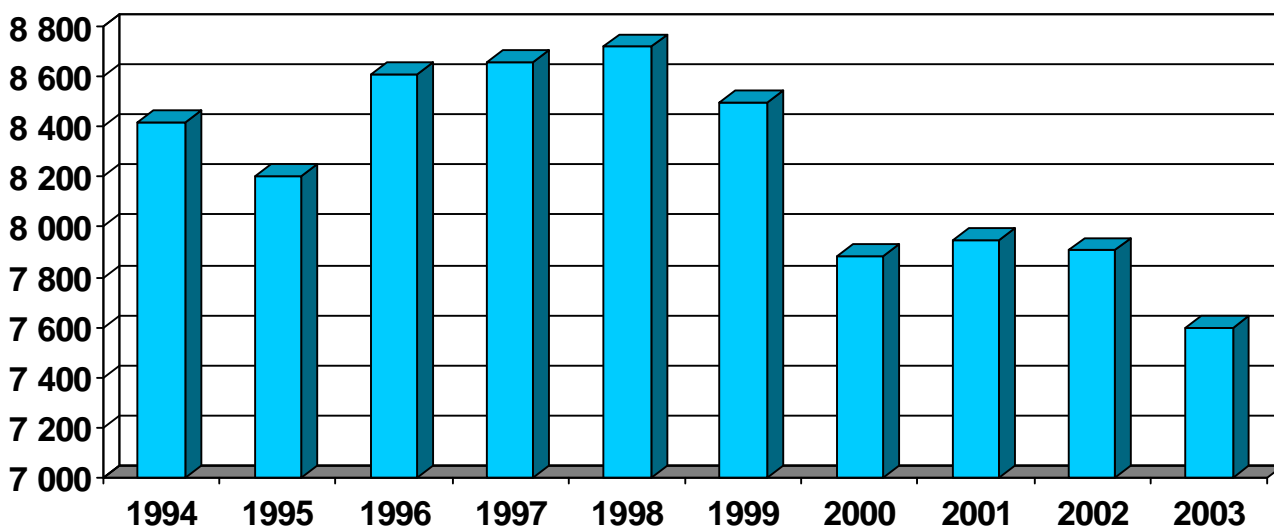
1960	1970	1980	1990	1993	1994	1995	1996	1997	1998	1999	2000	2001	2002	2003	2004
4167	4540	4996	5311	5336	5356	5368	5379	5388	5393	5399	5395	5390	5378	5380	5381



## GDP IN CONSTANT PRICES, changes in % - Medziročný vývoj HDP SR v stálych cenách

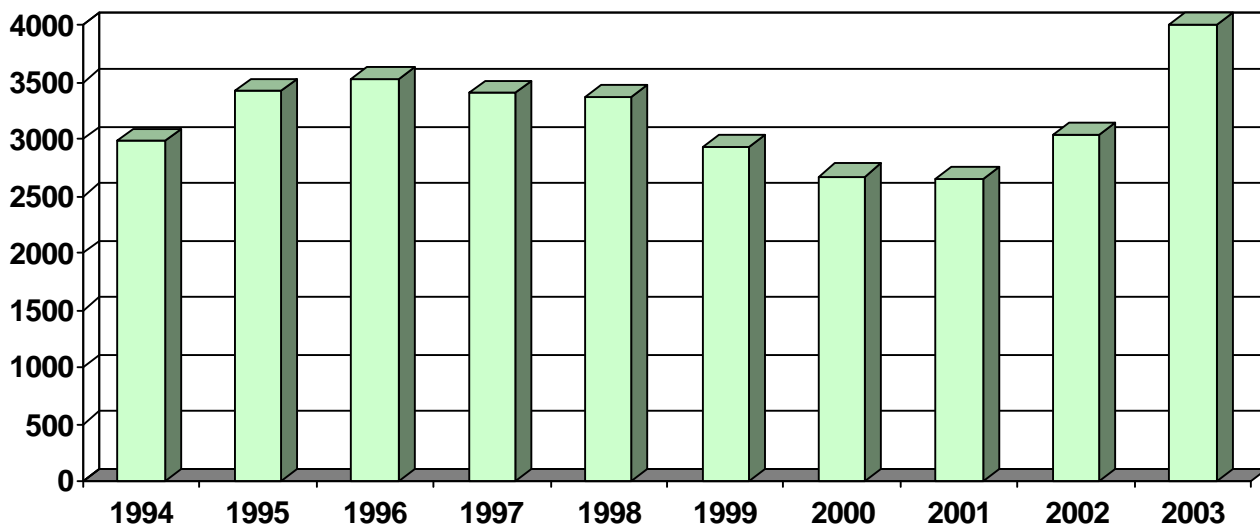


## GDP PPS per capita at constant prices in mill. - HDP PKS na obyv. v stálych cenách



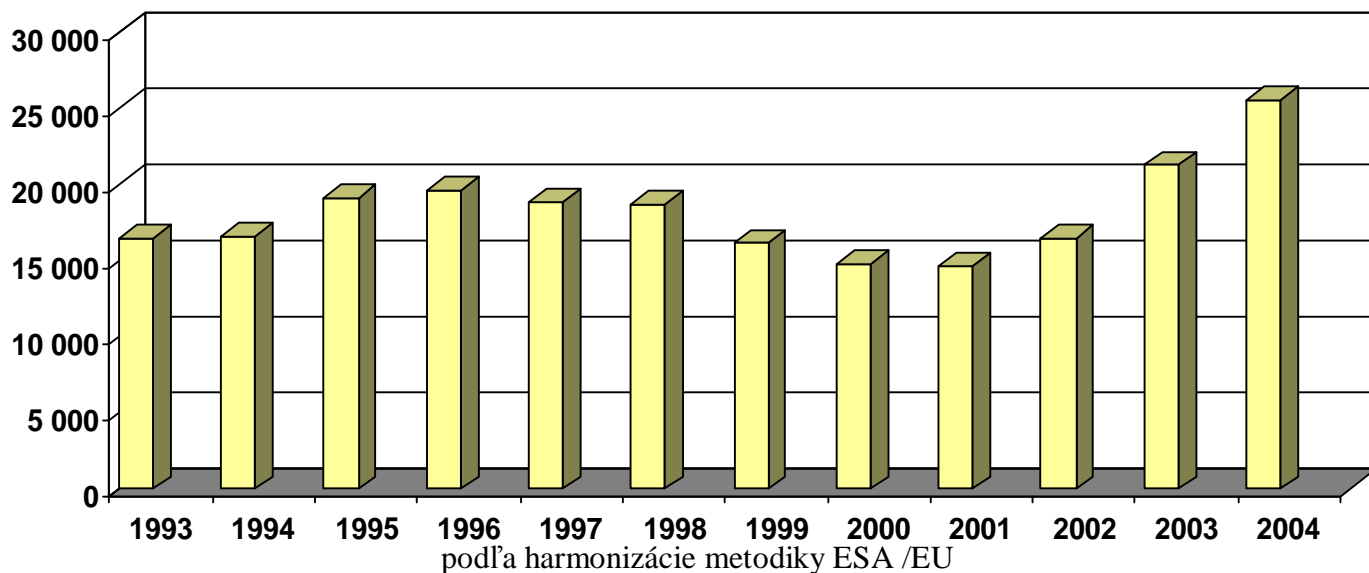
Legenda: PKS - parita kúpnej sily, PPS - purchasing power standard

## GDP per capita in USD at constant prices - HDP na obyvateľa v stálych cenách



Hrubý domáci produkt – HDP - v stál. cenách, 1995=100

## GROSS DOMESTIC PRODUCT (GDP) in mill. USD, at constant prices

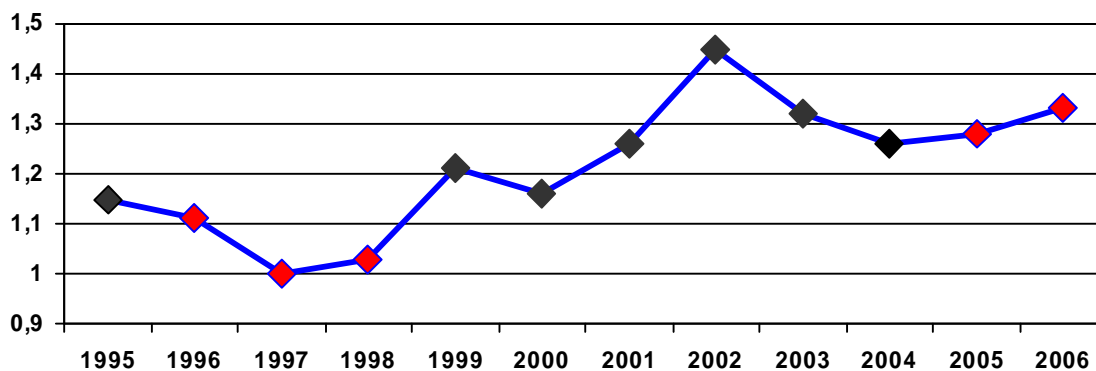


Kurz SKK k vybraným zahraničným menám vo vývoji

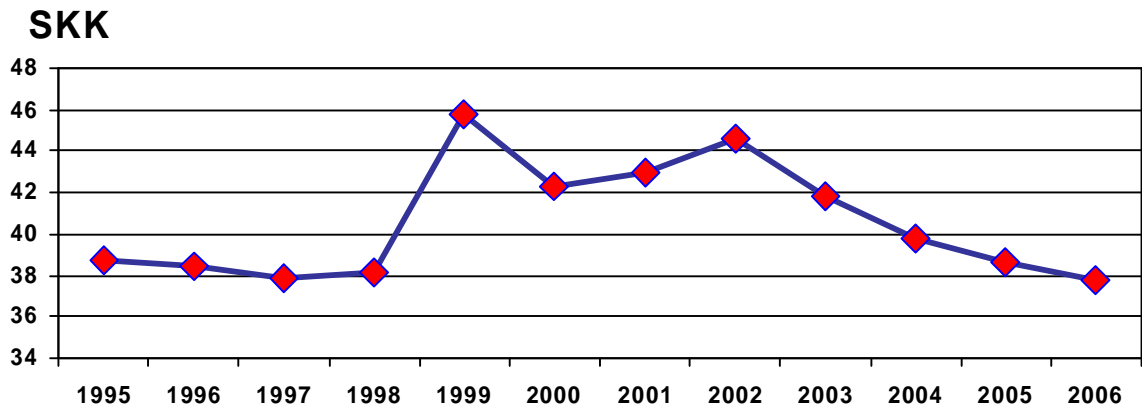
## EXCHANGE RATE - MONTH – VI.

### SKK / 1 CZK, Slovakia : Czechia

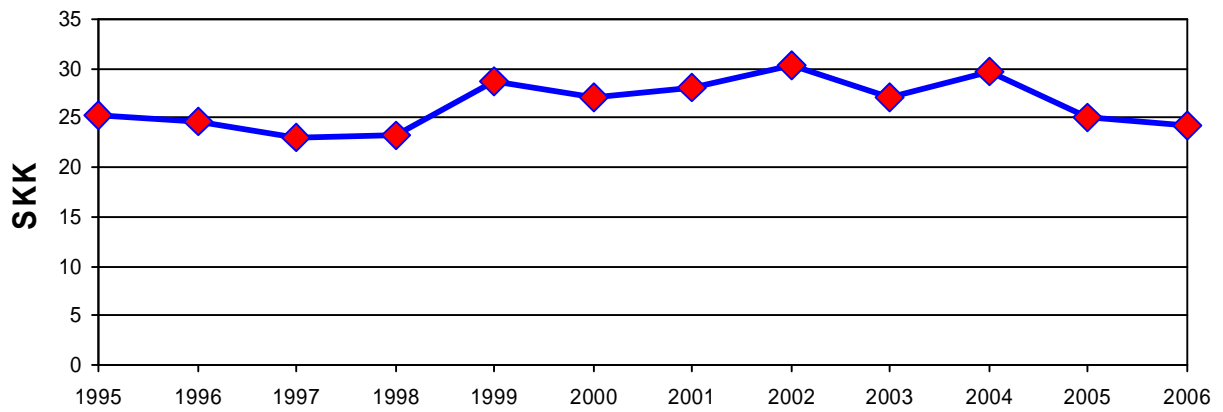
SKK



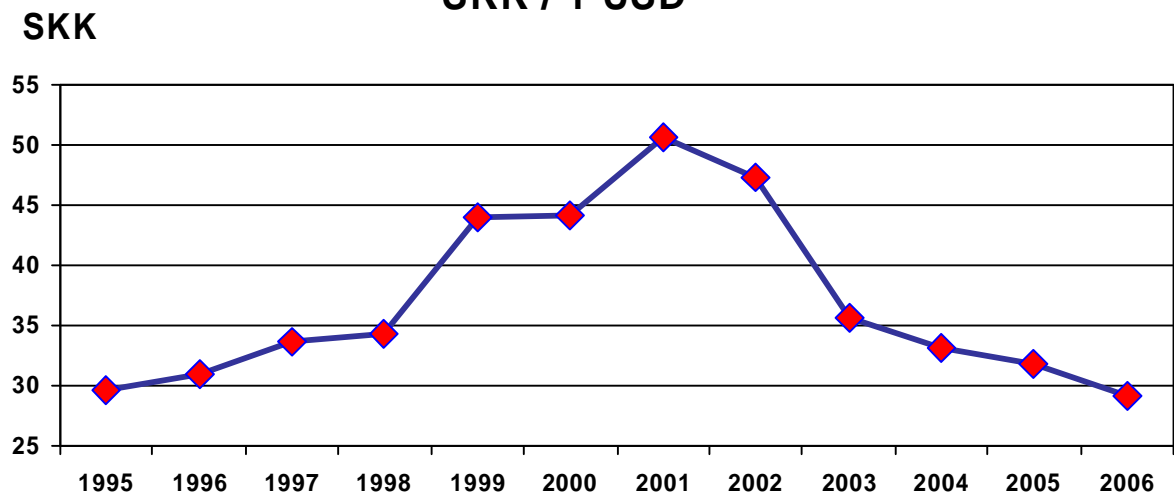
## SKK / 1 EUR



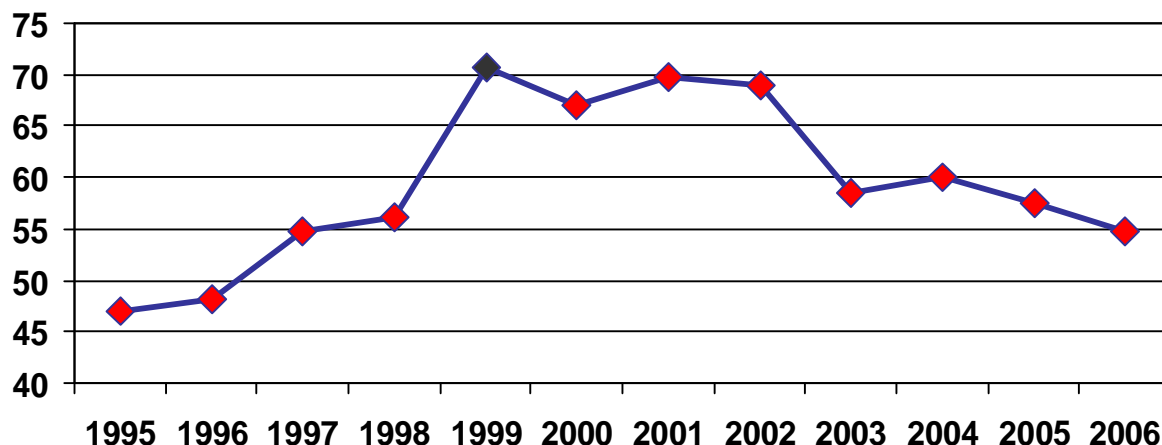
## SKK / 1 CHF



## SKK / 1 USD



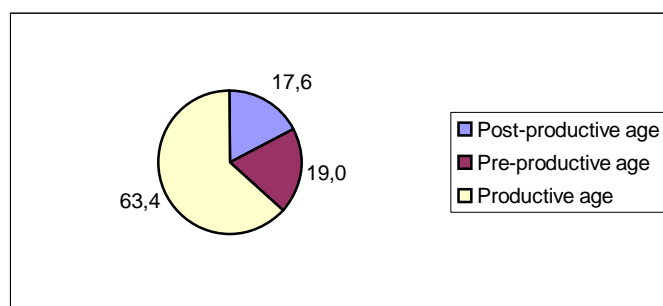
## SKK / 1 GBP



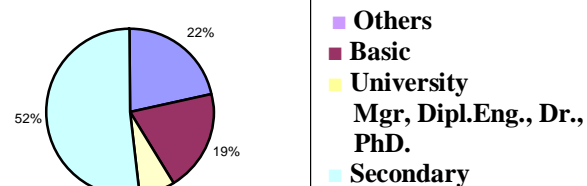
Source: SSU, NBS, Slovak Trade Forum, etc.

## ŽILINA COUNTY

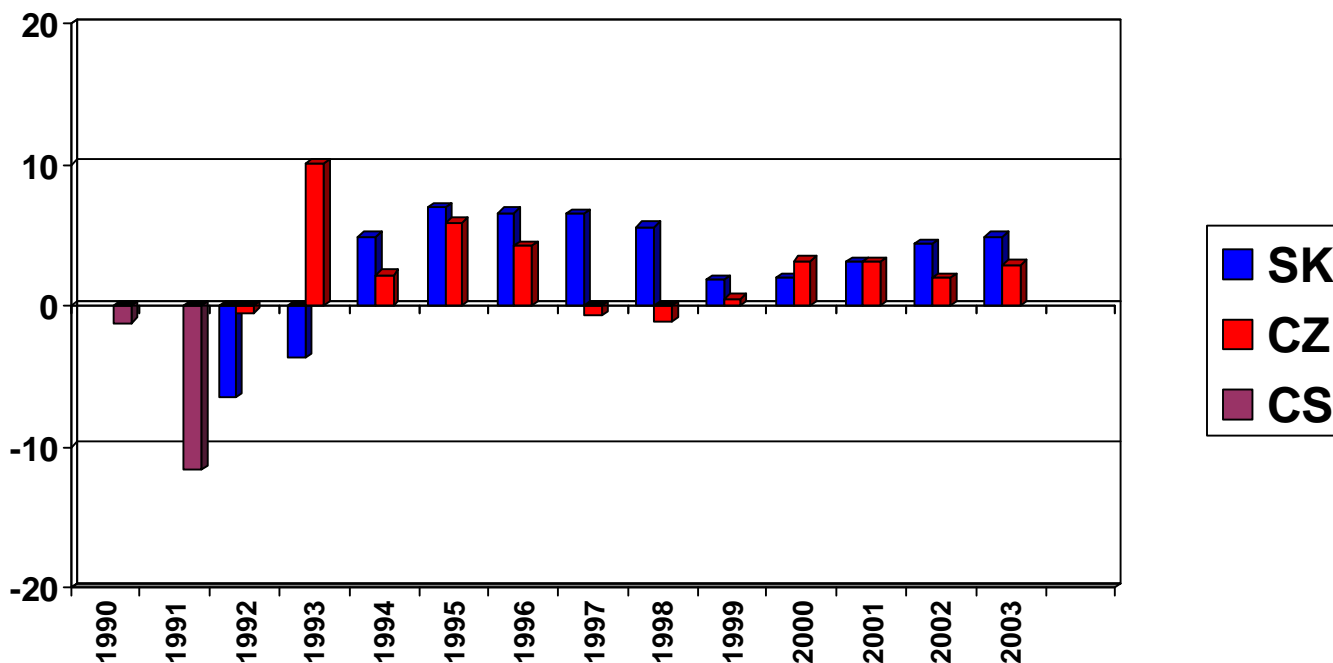
AGE STRUCTURE OF POPULATION %



EDUCATION



## GDP in Constant Prices, changes in %



# SLOVAK REPUBLIC - SLOVENSKÁ REPUBLIKA

Plocha územia SR

Surface area – 49 035 km<sup>2</sup>(1999),

Hustota obyvateľstva

Density per 1 km<sup>2</sup> - 110

Osem krajov

**EIGHT COUNTIES**

Žilinský kraj

## **ZILINA COUNTY – NORTH-SLOVAKIA COUNTY**

---

---

### **GEOGRAPHICAL DATA**

Obyvateľstvo kraja

**INHABITANTS OF COUNTY: app. 700 000**

Subregióny

### **SUBREGIONS:**

=====

**LIPTOV – ORAVA – TURIEC – POVAZIE – KYSUCE**

Krajské mesto - ŽILINA

### **Capital of County – ZILINA**

---

**The first written evidence** – prvá písomná. zmienka v roku - **1208**

Altitude – nadmor. výška - 342 m, Area - 8003 ha, Density per 1 km<sup>2</sup> app. – hust. obyv. - 1085

**Other towns: MARTIN - The first written evidence - 1264**

**RUZOMBEROK - -detto- - 1233**

**L. MIKULAS - -detto- - 1286**

**DOLNY KUBIN - -detto- - 1325**

**CADCA - -detto- - 1598**

**Encl.: NITRA - -detto- - 826**

Rieky v SR

### **MAIN RIVERS IN THE S.R.**

---

River DANUBE - LENGTH OF STREAM - 172 km

**River VAH - LENGTH OF STREAM - 367,2 km – the longest river of S.R.**

- the most town on river Vah - Zilina

**[www.viator.sk](http://www.viator.sk)**



Miera nezamestnanosti  
**UNEMPLOYMENT RATE, 30.IX.2004**  
SLOVAKIA – 18-19% - OECD, app. 15% - Ministry of Finance

=====

**Zilina County – NORTH-SLOVAKIA COUNTY - 11,95**

---

Zilina District	- 10,94	Bytca Di.	- 14,06
Lipt. Mikulas Di.	- 11,91	Martin Di.	- 11,68
Ruzomberok Di.	- 13,28	Cadca Di.	- 10,48
Turc. Teplice Di.	- 14,06	Namestovo Di.	- 8,70
Dolny Kubin Di.	- 12,87		

Priemerný mesačný plat  
**AVERAGE MONTHLY WAGE**

=====

as of January - September 2004

County :	BRATISLAVA	- 20 168 SKK
	ZILINA – NORTH-SLOVAKIA	- 13 199
	PRESOV	- 11 829
	KOSICE	- 14 630
	NITRA	- 12 613
	TRNAVA	- 13 871

**THE MAIN ADVANTAGES**  
OF THE ZILINA – NORTH-SLOVAKIA COUNTY POTENTIAL

=====

**TERRITORY OF COUNTY PROVED TO BE SECURED AGAINST ANY FLOODS – „THE VAH RIVER“. RELATIVELY THE BEST POSITION OF THE SLOVAK REPUBLIC.**

---

Kúpeľné mestá v Žilinskom kraji  
**SPA IN NORTH-SLOVAKIA COUNTY**

=====

**RAJECKE TEPLICE**  
**TURCIANSKE TEPLICE**  
**KORYTNICA**  
**LUCKY**  
**BESENOVA**  
**ORAVICE, etc.**

# **SOME FOREIGN INVESTORS IN ZILINA COUNTY**

**„Welcome in the North-Slovakia !“**

---

<b>ALCATEL</b>	<b>CRT ELECTRONIC</b>
<b>AVENTIS - HOECHST</b>	<b>TESCO</b>
<b>BENTHOR</b>	<b>SHELL</b>
<b>ENRICO</b>	<b>VOLKSWAGEN</b>
<b>ELECTRECITE DE FRANCE</b>	<b>DEXIA</b>
<b>FERONA</b>	<b>MOLLEX</b>
<b>HACO N.V.</b>	<b>JOHNSON-CONTROLS</b>
<b>INTRANS</b>	<b>IKEA</b>
<b>KAROL FRUHAUF</b>	<b>CARREFOUR</b>
<b>KJELLBERG</b>	<b>HEINEKEN</b>
<b>KIA</b>	<b>CSOB</b>
<b>HYUNDAI</b>	<b>SIEMENS</b>
<b>MIBA, DANA</b>	<b>REXROTH</b>
<b>NEUSIEDLER</b>	<b>MATSUSHITA</b>
<b>MOUNTFIELD</b>	<b>INA</b>
<b>PRAMET</b>	<b>PHILIPS</b>
<b>SLOVPOL EXIM</b>	<b>PUNCH</b>
<b>TPRESSTA EISELE</b>	<b>ECCO</b>
<b>WEINGART INC.</b>	<b>OMV</b>
<b>SHEERBONNET</b>	<b>Etc.</b>
<b>WEISHARDT</b>	
<b>INTERNATIONAL</b>	



# **NORTH-SLOVAKIA COUNTY**

## **THE MAIN BRANCHES OF ECONOMY**

---

---

Mechanical industry – Liptov, Orava, Turiec, Povazie, Kysuce, Zilina

Machinery industry – detto

Engineering – detto

Electrotechnical – detto

Personal computers – Liptov, Orava, Povazie, Zilina

Hardware – Zilina, Orava, Povazie, Liptov

Software – detto

Paper industry – Liptov, Povazie, Zilina, Turiec

Food industry – Liptov, Orava, Turiec, Povazie, Kysuce, Zilina

Automotive industry – Kysuce, Turiec, Zilina, Orava

Bearing industry – Zilina, Kysuce, Povazie

Tourist industry – Liptov, Orava, Turiec, Povazie, Kysuce, Zilina

Metallurgy – Orava, Turiec, Kysuce

Building industry – Liptov, Orava, Turiec, Povazie, Kysuce, Zilina

Wood processing – Liptov, Orava, Turiec, Povazie, Kysuce, Zilina

Chemical industry – Povazie, Zilina, Liptov

Textile industry – Liptov, Povazie, Zilina

Clothing – Liptov, Povazie, Zilina

Bricks industry – Turiec

Power station companies – Liptov, Orava, Turiec, Povazie, Zilina

Electro-energetical company – Povazie, Zilina, Turiec, Liptov, Orava

Research and development institution

for transport, textile, machinery – Liptov, Orava, Turiec, Povazie, Kysuce, Zilina

Export-import company – Liptov, Orava, Turiec, Povazie, Kysuce, Zilina

Road transport – Liptov, Orava, Turiec, Povazie, Kysuce, Zilina

Railway traffic – Liptov, Orava, Turiec, Povazie, Kysuce, Zilina

Education, training – Liptov, Turiec, Povazie, Zilina

Furniture industry – Liptov, Orava, Turiec, Povazie, Kysuce, Zilina

Production of engines, tractors, gearboxes – Povazie, Turiec, Kysuce, Zilina

Exhibitions, Fairs – Zilina, Kysuce

Printing industry – Turiec, Liptov, Zilina

Zinc coating – Zilina

Pharmaceutical industry – Turiec

Authorised testing laboratory – Zilina, Turiec

Technical gelatine – Liptov

Forest equipment – Turiec, Orava, Liptov

Windows, Machine for windows – Povazie, Zilina

Shoes companies – Turiec, Povazie, Kysuce

Universities – electrotechnical, mechanical, constructing, medicine, transport, econ.– Liptov, Turiec, Zilina

Secondary schools – Liptov, Orava, Turiec, Povazie, Kysuce, Zilina, etc

- engineering, electrotechnical, constructing, software, hardware, business, economy, textile, wood, automotive, mechanical, handicraft, paper, custom, management, industrial engineering, transport, agricultural, food, hotel.